

**GRASSROOTS LEVEL  
INSTITUTION  
STRENGTHENING AND  
TRANSFORMATION  
(GIST)**

**CRISP** 

Deliberate. Design. Deliver.

Centre for Research in  
Schemes and Policies

# Strengthening Grassroots Institutions for Climate Action

Grassroots institutions play a crucial role in addressing the pressing challenges of climate change and environmental degradation in rural communities.

## Gram Panchayats

Constitutional bodies responsible for local governance, with a mandate to tackle climate change and environmental issues.

## Self-Help Groups (SHGs)

Community-based organizations that provide critical support and empowerment, enabling communities to address climate

## Educational & Health Institutions

Schools, Anganwadi Centres, and Primary Health Centres that play a pivotal role in service delivery and awareness-raising.

By fostering collaboration and leveraging the strengths of local governance bodies, community organizations, and essential service providers, we can develop integrated solutions to build climate resilience and promote sustainable development.

# Objective of strengthening Grass root level Institutions

## **Unified Approach:**

Aligning efforts of Panchayat Raj Institutions, SHGs, schools, Anganwadi Centres, and PHCs to tackle climate change and its impacts on rural areas.

**Collaborative and Inclusive Solutions:** Address various issues faced by the community efforts through joint efforts.

## **Strengthening SDG 16:**

Promoting peaceful and inclusive societies through effective, accountable, and transparent institutions at the grassroots level .

# Path forward: Integration and Convergence

## Data Sharing and Communication:

- Establish systems for seamless data sharing and communication among institutions.
- Ensure availability of relevant information for informed

## Collaborative Governance:

- Promote regular interactions and joint planning sessions among institutions.
- Align goals and coordinate efforts to maximize impact.

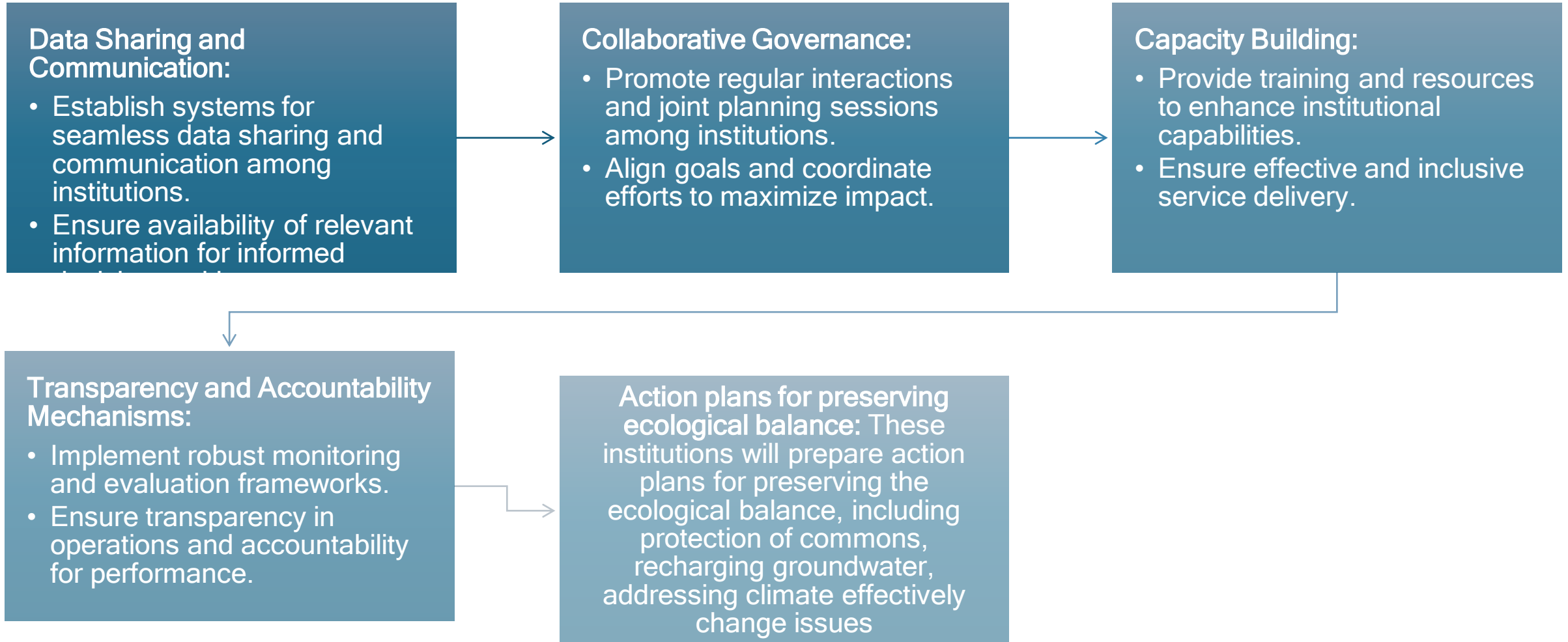
## Capacity Building:

- Provide training and resources to enhance institutional capabilities.
- Ensure effective and inclusive service delivery.

## Transparency and Accountability Mechanisms:

- Implement robust monitoring and evaluation frameworks.
- Ensure transparency in operations and accountability for performance.

**Action plans for preserving ecological balance:** These institutions will prepare action plans for preserving the ecological balance, including protection of commons, recharging groundwater, addressing climate effectively change issues



# GIST

## **Fostering Convergence**

Align the efforts of Panchayat Raj Institutions, SHGs, schools, Anganwadi Centres, and PHCs to tackle climate change and its impacts.

## **Enhancing Service Delivery**

Implement integrated solutions to address complex issues like groundwater depletion, deforestation, and environmental pollution.

## **Promoting Inclusive Participation**

Ensure that all community members, especially marginalized groups, are included in decision-making and service delivery.

# Objectives of GIST

## Create Convergence Among Institutions & Foster Collaborative Governance:

- Develop mechanisms for integration among grassroots institutions (Panchayat Raj Institutions, schools, Anganwadi Centres, SHGs, PHCs).
- Establish frameworks for data sharing, collaborative planning, and coordinated actions.
- Strengthen trust and cooperation among local governance bodies.

## Planning for Ecological Security and Sustainable Development:

- Joint planning for environmental security and sustainable development.
- Emphasize community participation and innovative strategies for managing common resources.

## Enhance Data Sharing and Integration & Strengthen Institutional Capacities:

- Implement systems for seamless data sharing and communication.
- Provide targeted training and resources for improving service delivery and governance.

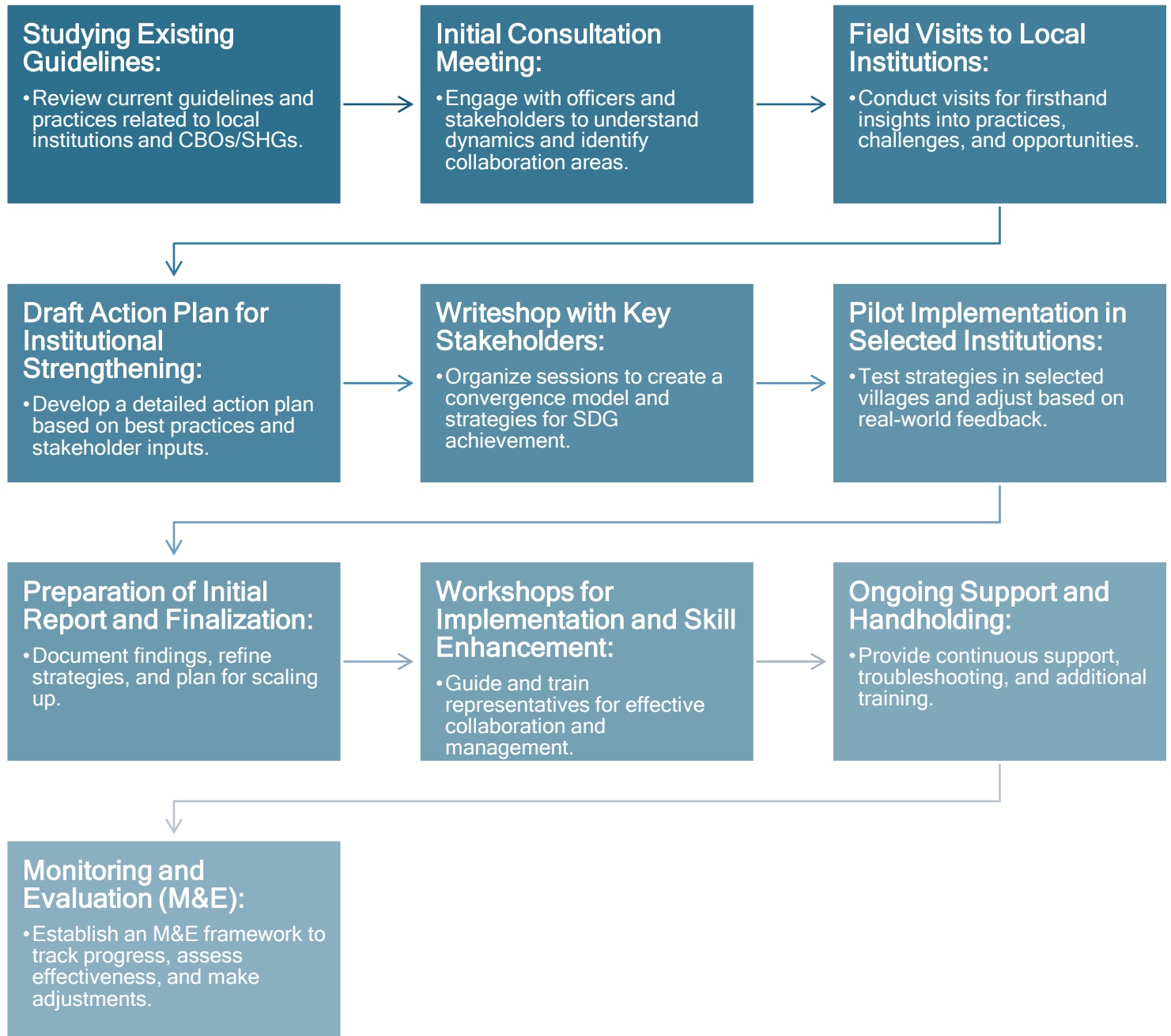
## Increase Transparency and Accountability & Inclusive Service Delivery:

- Establish monitoring and evaluation mechanisms.
- Ensure equitable access to services, address barriers to inclusion.

## Promote Social Justice through Rights-Based Development:

- Focus on equitable development of marginalized sections.
- Ensure equal access to resources and opportunities, reduce inequalities.

# Steps in implementing GIST



# Expected Outcomes from GIST

## Enhanced Convergence & Collaboration

Improved integration and cooperation among local institutions, leading to a more cohesive and practical approach to community development.

## Improved Service Delivery

More targeted and efficient interventions, addressing the needs of all community members, especially vulnerable populations.

## Increased Transparency & Accountability

Higher levels of public trust through transparent and accountable practices within grassroots institutions

## Strengthened Climate Resilience

Decreased climate vulnerability and improved adaptive strategies, fostering ecological security and sustainable livelihoods.



# Theory of change of GIST

## Inputs

- **Funding:** Financial resources from government and non-government sources.
- **Expertise:** Knowledge and experience from CRISP members and other experts.
- **Government Collaboration:** Partnerships with local and state government bodies.
- **Community Engagement:** Participation and input from local communities and grassroots institutions.

## Activities

- Studying Existing Guidelines on Strengthening Local Institutions
- Initial Consultation Meeting
- Field Visits to Local Institutions
- Draft Action Plan for Institutional Strengthening
- Writes Shop with Key Stakeholders
- Pilot Implementation in Selected Institutions
- Preparation of Initial Report and finalisation
- Workshops for Implementation and Skill Enhancement
- Ongoing Support and Handholding

## Outputs

- **Established Frameworks:** Guidelines and protocols for improving institutional collaboration.
- **Trained Personnel:** Enhanced skills and knowledge among local institution representatives.
- **Improved Infrastructure:** Upgraded facilities and resources for better service delivery including more better Utilizations of .
- **Data Systems:** Implemented systems for data sharing and integration including mapping of critical
- Commons-related data gaps

## Outcomes

- **Enhanced Service Delivery & Greater Institutional Collaboration:** More efficient and targeted services to community members, leading to Improved coordination and partnership among local institutions.
- **Increased Public Trust:** Higher levels of trust in local institutions due to transparency and accountability.
- **Strengthened Governance:** More practical and inclusive governance practices at the grassroots level.
- **Improved Livelihoods** through Community based organisations involed in Valuchain Activities .
- **Improved Common Utilizations** under community-led management

## Impact

- **Sustainable Community Development:** Long-term improvements in living standards and community well-being.
- **Reduced Inequality:** More equitable access to services and opportunities for all community members.
- **More vital Institutions:** Robust, accountable, and inclusive institutions that address local needs.
- **Improved Standard of Living** among the Communities
- **Reduced climate vulnerability** among the Communities
- **Improved Climate Actions** at Village level by the Commnities

# Indicative measurable outcomes in Year1

1

## **Resource Convergence**

Better convergence of resources between Gram Panchayat Development Plans (GPDP) and Village Poverty Reduction Plans (VPRP) in at least one state.

2

## **Natural Resource Management**

Influence at least two schemes related to natural resource management and eco-restoration under Panchayat Raj Institutions and other grassroots institutions.

3

## **Capacity Building**

Improve the curriculum for panchayat-level functionaries, committees, and leaders at one State Institute of Rural Development (SIRD) for better management of common resources.

# Advantages for CRISP



**Easy Access to State Governments**

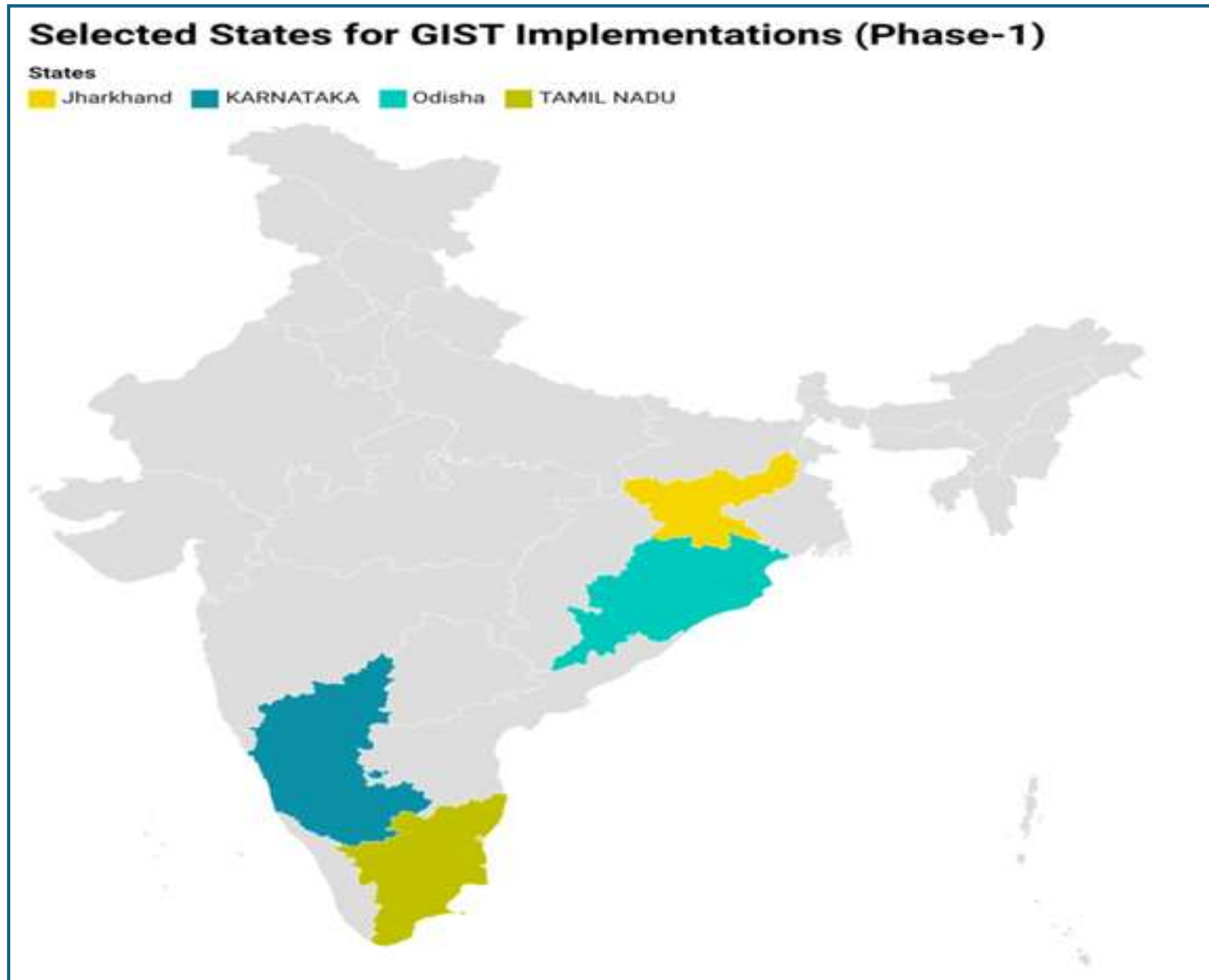
**In-depth Understanding of Field-level Issues.**

**High Government Acceptability**

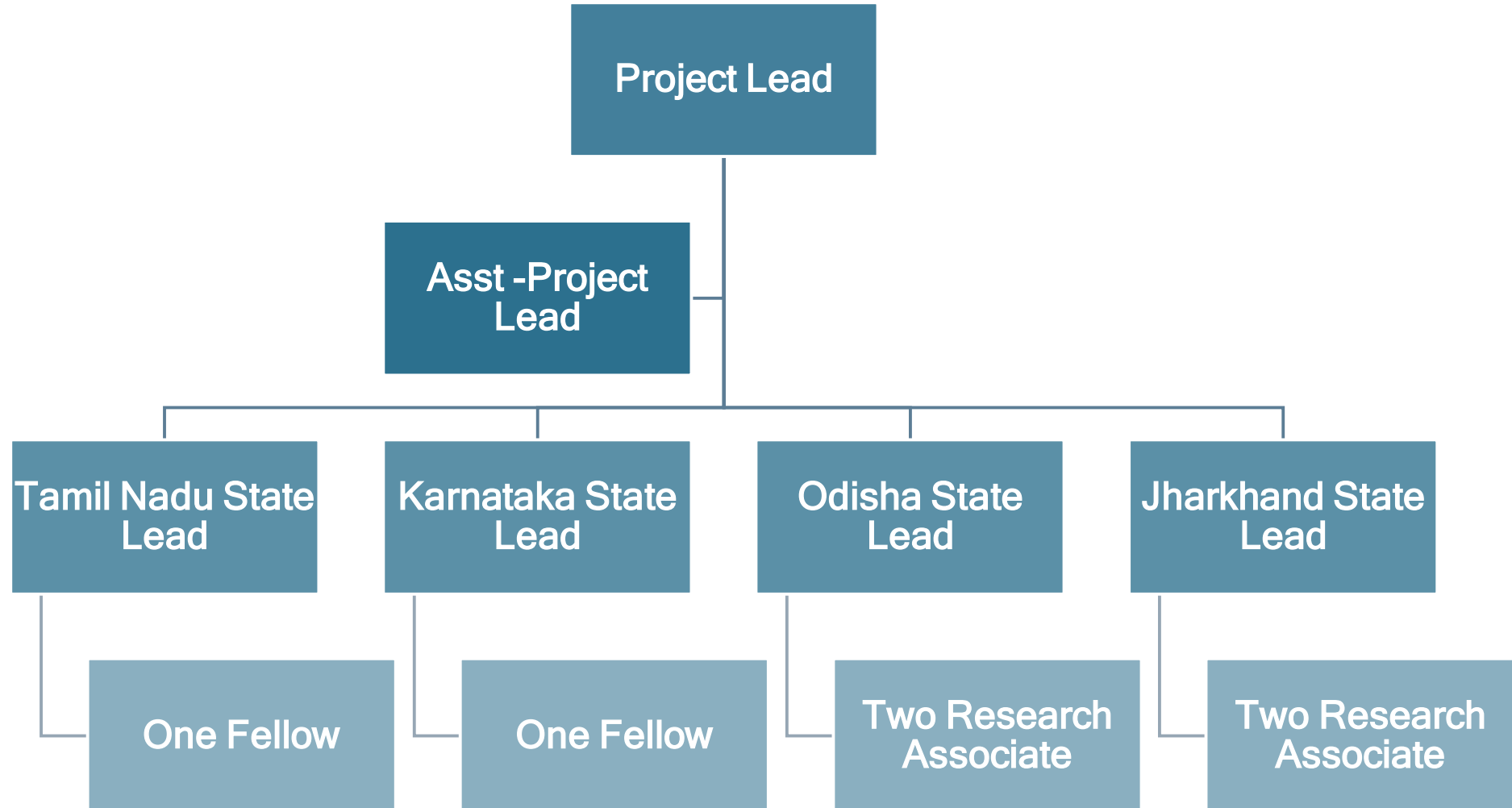
**Capability to Design and Redesign Large Schemes:**

**Rapid Mobilization**

# Proposed Project Area



# Team Structure



# Budget

Expense head	Rate	Units	Amount (in INR)	Proposed budget (in INR)
<u>Project Lead</u> - factoring in 50%-time allocation to the GIST	24 Lakhs p.a.	1	24,00,000	12,00,000
<u>Assistant Project Lead</u> - factoring in 100%-time allocation to the GIST	15 Lakhs p.a.	1	15,00,000	15,00,000
<u>State Leads</u> New recruits in Odisha, Jharkhand (100%-time allocation to GIST) Existing Leads in Tamil Nadu, Karnataka	20 Lakhs p.a.	2	40,00,000	40,00,000
– One additional Fellow for the existing teams in Tamil Nadu, Karnataka (100%-time allocation)	9 Lakhs	2	18,00,000	18,00,000
<u>Research Associates</u> Two associates each in Odisha, Jharkhand, to be recruited & placed starting from 1 <sup>st</sup> month of Year 1 (100%-time allocation)	6.4 Lakhs p.a.	4	25,60,000	25,60,000
<u>Transportation</u> Based on the number of districts and personnel in Odisha & Jharkhand  Tamil Nadu & Karnataka	2.5 Lakhs p.a.  1.5 Lakhs p.a.	2  2	5,00,000  3,00,000	8,00,000
<u>Administrative Expenses</u>	6 Lakhs p.a.	1	6,00,000	6,00,000
<u>Monitoring &amp; Evaluation</u>	6 Lakhs p.a.	1	6,00,000	6,00,000
Total Budget (in INR)				<b>1,30,60,000/-</b>

Thank You

